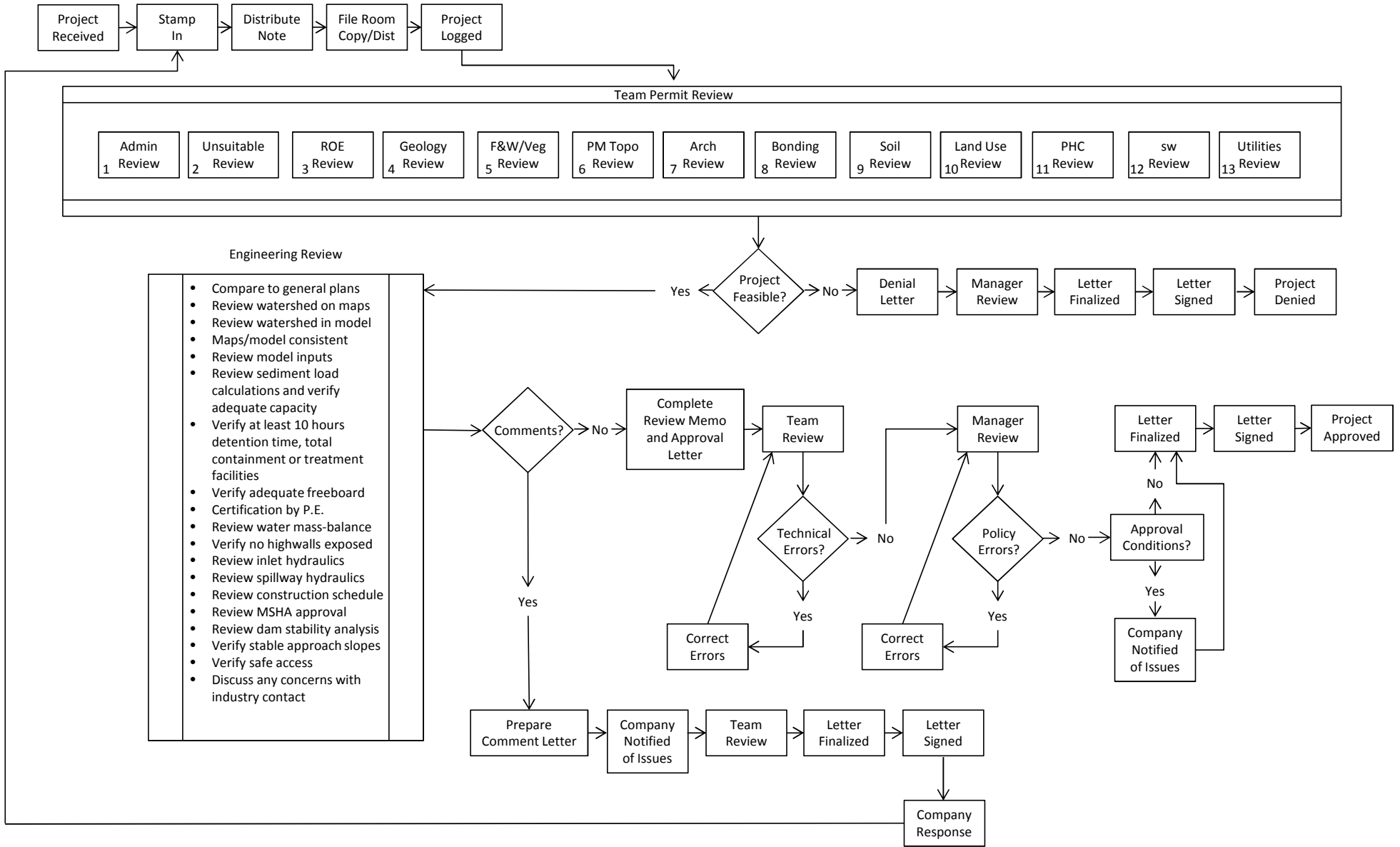


# Sedimentation Pond Review Process Map



1

Administrative Review

<ul style="list-style-type: none"> <li>• Verify submittal of application filing fee</li> <li>• Verify submittal of Form SMRD-2C</li> <li>• Verify assignment of revision number</li> <li>• Determine whether changes are an administrative or significant revision</li> <li>• §§12.108 and 12.226</li> </ul>	
--	--

2

Unsuitability Review

<ul style="list-style-type: none"> <li>• Verify in section .118 of the permit that the area is not in an area unsuitable for mining</li> <li>• Review permit boundary map to verify that changes are located within the permit boundary</li> <li>• Review map of public roads in the permit to verify disturbance will be more than 100 feet from the right-of-way of any public road or a buffer zone variance is approved</li> <li>• §§12.71 and 12.152</li> </ul>	
--	--

3

Right-of-Entry Review

<ul style="list-style-type: none"> <li>• Locate the affected area on the approved property map</li> <li>• Identify affected property tracts</li> <li>• Review property ownership information in the permit to verify that right-of-entry has been documented for the affected tracts</li> <li>• Verify that any necessary landowner consultation is provided</li> <li>• Review approved property map to verify that disturbance will be over 300 feet from an occupied dwelling or a waiver from the dwelling owner is provided</li> <li>• §12.117</li> </ul>	
---	--

4

Geology Review

<ul style="list-style-type: none"> <li>• Review the approved continuous core map to verify adequate continuous core density for the affected area</li> <li>• Verify that supplemental borehole data is not needed</li> <li>• Review any provided plan/profile maps to determine the depth of any proposed cuts</li> <li>• Verify adequacy of the approved AFM disposal plan</li> <li>• Review the approved dewatering/depressurization plan to determine impacts to the approved dewatering and/or depressurization plan</li> <li>• §§12.127, 12.128 and 12.145</li> </ul>	
--	--

5

Fish & Wildlife/ Vegetation Review

<ul style="list-style-type: none"> <li>• Review the approved USACE permit to determine if the proposed disturbance is within the approved USACE disturbance boundary</li> <li>• Review permit section .133 to verify that the disturbance will not affect threatened and/or endangered species</li> <li>• Determine whether fish and wildlife enhancements are needed</li> <li>• Review the approved planting lists to verify adequacy of the proposed plan</li> <li>• §§12.133, 12.144 and 12.145(b)(5)</li> </ul>	
---	--

6

Postmine Topography Review

<ul style="list-style-type: none"> <li>• Identify the approved postmine topography maps</li> <li>• Verify that proposed changes are consistent with the approved postmine topography</li> <li>• Verify that any needed general design plans are provided or already approved</li> <li>• Review the approved postmine slope map to verify that the proposed changes are supported</li> <li>• §§12.137(a)(11) and 12.145(b)(3)</li> </ul>	
---	--

7

Archeology Review

<ul style="list-style-type: none"> <li>• Review the approved cultural resources information in the permit to determine the proximity of proposed disturbance to known sites</li> <li>• Determine if disturbance will affect a site listed or eligible for listing on the National Register of Historic Places</li> <li>• Verify clearance by the Texas Historical Commission of any impacted sites</li> <li>• §§12.125(2) and 12.151</li> </ul>	
---	--

8

Bonding Review

<ul style="list-style-type: none"> <li>• Identify the approved bond map</li> <li>• Verify adequate bonding coverage for all proposed disturbance</li> <li>• Verify that proposed disturbance is accounted for in the approved reclamation cost estimate</li> <li>• Review the approved bond map to determine if the proposed activities will impact areas not covered by the bond or areas where bond release was previously approved</li> <li>• §§12.142(2)(C) and 12.145(b)(2)</li> </ul>	
---	--

Soil Review

<ul style="list-style-type: none"> <li>Review the approved soil testing plan and verify that new disturbed areas are located within the approved soil bank</li> <li>Review the approved prime farmland soil map to determine if prime farmland soils are affected</li> <li>Determine if the approved soil handling plan is sufficient for the proposed activities</li> <li>Verify the suitability and disposition of excavated materials is adequately addressed</li> <li>Verify suitability of material in borrow areas</li> <li>Verify the location of disposed excess material</li> <li>Determine if any special soil testing plan is needed</li> <li>§§12.134, 12.12.138 and 12.145(b)(4)</li> </ul>	
--	--

Utilities Review

<ul style="list-style-type: none"> <li>Identify the approved utilities map</li> <li>Determine if active hazardous pipelines are located within 100 feet of proposed cuts</li> <li>For cuts within 100 feet of a pipeline, verify that pipeline owner consent has been provided or a buffer zone variance is approved</li> <li>Verify that sufficient information is provided to find that the structural integrity of any affected pipeline will be maintained</li> <li>Verify sufficient cover remains over affected pipelines</li> <li>§§12.137(a)(10) and 12.382</li> </ul>	
--	--

Postmine Land Use Review

<ul style="list-style-type: none"> <li>Identify the approved postmine land use map</li> <li>Determine if the proposed disturbance is new</li> <li>Determine the approved postmine land use for the affected area</li> <li>Determine if the proposed changes would result in changes to the approved postmine land use plan</li> <li>Verify that necessary landowner consultation has been provided</li> <li>§§12.147 and 12.399</li> </ul>	
--	--

Probable Hydrologic Consequences Review

<ul style="list-style-type: none"> <li>Review the approved LTGM and LTSM plan maps to determine if the proposed changes will impact the approved long term surface and/or ground water monitoring plans</li> <li>Determine if the proposed changes will exceed evaporative losses or pond acreage considered in the approved PHC</li> <li>Review the approved TPDES outfall map to determine if any TPDES outfalls will be affected by the proposed changes</li> <li>Review the approved LTGM and LTSM plan maps to determine if the affected area is within the LTSM/LTGM monitored areas</li> <li>§12.146</li> </ul>	
--	--

Surface Water Review

<ul style="list-style-type: none"> <li>Review the approved surface water control map to verify that the proposed activities are within the approved surface water control boundary</li> <li>For areas outside the approved surface water control boundary, verify submittal of a site-specific erosion control plan</li> <li>Review the approved map of surface water bodies to determine impacts to stream channels</li> <li>Verify that a stream buffer zone variance is proposed or has been approved for affected streams channels</li> <li>§§12.137(a)(7),12.148, 12.341, 12.343, 12.344, 12.347 and 12.355</li> </ul>	
---	--