



Inspections and Violations Data

Revised 1/2/2019

Table of Contents

Table of Contents	ii
Purpose of Document	1
Data Set Information	1
1. Description	1
2. Data Set Availability	2
3. Live Availability of Data	2
4. Data Analysis Tools	2
Data Export Information	2
File Description	4
Additional Information Regarding the Files	5
Inspections Data Sets File Definitions	6
Violations Data Sets File Definitions	6
Data Dictionary	8
Inspections Data Sets	8
Data Field Description	8
Violations Data Sets	10
Data Field Description	10
Opening Text Files in Microsoft Excel	13
To Extract a File from a Compressed Folder	13
To Open a Text File in Microsoft Excel	14
Version	17

Purpose of Document

This document provides the file format and data dictionary for Railroad Commission of Texas inspection and violation data sets.

Data Set Information

1. Description

These data sets provide inspection and violation data from completed inspections performed by RRC Oil and Gas Division inspectors since August 1, 2015, of oil and gas leases, wells, facilities, and other sites.

Statewide and district data sets are available.

If you have questions regarding the data, contact the appropriate [Oil and Gas District Office](#).

Data is from inspections from August 2015 to the present. To request inspection and violation information before August 2015, you can contact open.records@rrc.texas.gov.

Disclaimer: A "data set" is any set of information electronically generated or stored by Railroad Commission of Texas (Commission) systems, including, but not limited to, the Commission's Geographic Information System, Online Research Query System, or Mainframe System.

The data sets provided by the Online Research Query System are continually being updated and are provided as a public service for informational purposes only. They are not intended to be used as an authoritative public record and have no legal force or effect. Users are responsible for checking the accuracy, completeness, currency, and/or suitability of these data sets themselves.

The Commission specifically disclaims any and all warranties, representations, or endorsements, express or implied, with regard to these data sets, including, but not limited to, the warranties of merchantability, fitness for a particular purpose, or non-infringement of privately owned rights.

Important: Some records in the Inspections and Violations Data Files may not contain applicable information for all data fields because the information was not available to the inspector at the time of the inspection for the inspected location. In these cases, data columns such as Operator Name, Operator Number, Lease Number, Lease Name, API Number, Well Number, Drilling Permit Number, and Field Name, may be blank or contain placeholder values such as “unknown” or “00000.”

2. Data Set Availability

The data sets are updated weekly.

3. Live Availability of Data

The data may be queried live via the RRC Online Inspection Lookup (RRC OIL) at <http://webapps2.rrc.texas.gov/PDA/ice/pdaIceHome.xhtml>

4. Data Analysis Tools

- Data may be viewed using one or more different types of tools. Below is a list of general tools that may be used for data analysis.
 - For small data sets, [spreadsheet software](#) may be used to view the file(s).
 - For small and/or large data sets, [text editors](#) may be used to view the file(s).
- Data may be analyzed using one or more different types of tools.
 - For small and/or large data sets, database software may be used to analyze the file(s).
 - For small data sets, [spreadsheet software](#) may be used to analyze the file(s).

Data Export Information

File Name(s)	
	INSPECTIONS.txt
	INSPECTIONS_DIST01.txt
	INSPECTIONS_DIST02.txt
	INSPECTIONS_DIST03.txt
	INSPECTIONS_DIST04.txt
	INSPECTIONS_DIST05.txt
	INSPECTIONS_DIST06.txt
	INSPECTIONS_DIST7B.txt
	INSPECTIONS_DIST7C.txt
	INSPECTIONS_DIST08.txt
	INSPECTIONS_DIST8A.txt
	INSPECTIONS_DIST09.txt
	INSPECTIONS_DIST10.txt

	VIOLATIONS.txt VIOLATIONS_DIST01.txt VIOLATIONS_DIST02.txt VIOLATIONS_DIST03.txt VIOLATIONS_DIST04.txt VIOLATIONS_DIST05.txt VIOLATIONS_DIST06.txt VIOLATIONS_DIST7B.txt VIOLATIONS_DIST7C.txt VIOLATIONS_DIST08.txt VIOLATIONS_DIST8A.txt VIOLATIONS_DIST09.txt VIOLATIONS_DIST10.txt
Export Format	Text (.txt) file. Downloaded in a compressed folder (ZIP format). The text files may automatically open in a text reader such as <i>Notepad</i> . See the Opening Text Files in Microsoft Excel section for more information about opening the files.
File Delimiter	}
Delivery Format	File downloads from the RRC website at https://www.rrc.texas.gov/resource-center/inspections-and-violations/

File Description

File Name	File Description
INSPECTIONS.txt	The statewide data set for inspection information.
INSPECTIONS_DIST01.txt	The Oil & Gas District 1 data set for inspection information.
INSPECTIONS_DIST02.txt	The Oil & Gas District 2 data set for inspection information.
INSPECTIONS_DIST03.txt	The Oil & Gas District 3 data set for inspection information.
INSPECTIONS_DIST04.txt	The Oil & Gas District 4 data set for inspection information.
INSPECTIONS_DIST05.txt	The Oil & Gas District 5 data set for inspection information.
INSPECTIONS_DIST06.txt	The Oil & Gas District 6 data set for inspection information.
INSPECTIONS_DIST7B.txt	The Oil & Gas District 7B data set for inspection information.
INSPECTIONS_DIST7C.txt	The Oil & Gas District 7C data set for inspection information.
INSPECTIONS_DIST08.txt	The Oil & Gas District 8 data set for inspection information.
INSPECTIONS_DIST8A.txt	The Oil & Gas District 8A data set for inspection information.
INSPECTIONS_DIST09.txt	The Oil & Gas District 9 data set for inspection information.
INSPECTIONS_DIST10.txt	The Oil & Gas District 10 data set for inspection information.
VIOLATIONS.txt	The statewide data set for violation information.
VIOLATIONS_DIST01.txt	The Oil & Gas District 1 data set for violation information.
VIOLATIONS_DIST02.txt	The Oil & Gas District 2 data set for violation information.
VIOLATIONS_DIST03.txt	The Oil & Gas District 3 data set for violation information.
VIOLATIONS_DIST04.txt	The Oil & Gas District 4 data set for violation information.
VIOLATIONS_DIST05.txt	The Oil & Gas District 5 data set for violation information.
VIOLATIONS_DIST06.txt	The Oil & Gas District 6 data set for violation information.
VIOLATIONS_DIST7B.txt	The Oil & Gas District 7B data set for violation information.
VIOLATIONS_DIST7C.txt	The Oil & Gas District 7C data set for violation information.

File Name	File Description
VIOLATIONS_DIST08.txt	The Oil & Gas District 8 data set for violation information.
VIOLATIONS_DIST8A.txt	The Oil & Gas District 8A data set for violation information.
VIOLATIONS_DIST09.txt	The Oil & Gas District 9 data set for violation information.
VIOLATIONS_DIST10.txt	The Oil & Gas District 10 data set for violation information.

Additional Information Regarding the Files

These data files are updated weekly and contain the full data set for inspections or violations information since August 1, 2015, for the state or the district. Therefore, the files are constantly increasing in size.

Inspections Data Sets File Definitions

The following information applies to the statewide and district **inspection** data sets.

Data Field No.	Data Field Name	Null	Type
1	OPERATOR_NAME	Y	VARCHAR2 (50 BYTE)
2	P5_OPERATOR_NO	Y	VARCHAR2 (8 BYTE)
3	DISTRICT	Y	VARCHAR2 (2 BYTE)
4	DISTRICT_OFFICE_INSPECTING	Y	VARCHAR2 (35 BYTE)
5	OIL_LEASE_GAS_WELL_ID	Y	VARCHAR2 (40 BYTE)
6	LEASE_FAC_NAME	Y	VARCHAR2 (50 BYTE)
7	API_NO	Y	VARCHAR2 (8 BYTE)
8	COUNTY	Y	VARCHAR2 (50 BYTE)
9	WELL_NO	Y	VARCHAR2 (6 BYTE)
10	INSPECTION_DATE	Y	DATE
11	DRILLING_PERMIT_NO	Y	VARCHAR2 (6 BYTE)
12	COMPLAINT_NO	Y	NUMBER
13	COMPLIANCE	Y	VARCHAR2 (12 BYTE)
14	FIELD_NAME	Y	VARCHAR2 (50 BYTE)

Violations Data Sets File Definitions

The following information applies to the statewide and district **violation** data sets.

Data Field No.	Data Field Name	Null	Type
1	OPERATOR_NAME	Y	VARCHAR2 (50 BYTE)
2	P5_OPERATOR_NO	Y	VARCHAR2 (8 BYTE)
3	DISTRICT	Y	VARCHAR2 (2 BYTE)
4	OIL_LEASE_GAS_WELL_ID	Y	VARCHAR2 (40 BYTE)
5	LEASE_FAC_NAME	Y	VARCHAR2 (50 BYTE)
6	API_NO	Y	VARCHAR2 (8 BYTE)
7	COUNTY	Y	VARCHAR2 (50 BYTE)
8	WELL_NO	Y	VARCHAR2 (6 BYTE)
9	DRILLING_PERMIT_NO	Y	VARCHAR2 (6 BYTE)
10	FIELD_NAME	Y	VARCHAR2 (50 BYTE)
11	VIOLATED_RULE	Y	VARCHAR2 (100 BYTE)

Data Field No.	Data Field Name	Null	Type
12	VIOLATED_RULE_DESC	Y	VARCHAR2 (255 BYTE)
13	MAJOR_VIOL_IND	Y	VARCHAR2 (1 BYTE)
14	COMPLIANT_ON_REINSP	Y	CHAR (1 BYTE)
15	LAST_ENF_ACTION	Y	VARCHAR2 (59 BYTE)
16	LAST_ENF_ACTION_DATE	Y	DATE
17	VIOLATION_DISC_DATE	Y	DATE

Data Dictionary

The data dictionary provides the description of the data fields in the files.

Inspections Data Sets

The following field names and descriptions apply to the statewide and district **inspection** data sets.

Data Field Name	Data Field Description
OPERATOR_NAME	<p>The name of the operator of the inspected lease, well, facility, or site at the time of the inspection.</p> <p>When the operator of the inspected location is unknown, this field may be blank or contain the best name available and documented by the inspector.</p>
P5_OPERATOR_NO	<p>The P-5 number of the operator of the inspected lease, well, facility or site at the time of the inspection. This number is assigned to the organization by the RRC with the initial filing of the Form P-5, Organization Report.</p> <p>When the operator number of the inspected location is unknown, this field may be blank or contain the best data available and documented by the inspector.</p>
DISTRICT	<p>The district number represents the RRC completion district associated to the RRC assigned lease number or gas well ID at the time of the inspection. If the inspected location does not have an assigned lease number or gas well ID, the district number is the RRC Oil & Gas district where the site is located.</p>
DISTRICT_OFFICE_INSPECTING	<p>The RRC district office that conducted the inspection. If an inspector is not assigned a home district office in the source inspection system, the system will display "Unassigned Office."</p>
OIL_LEASE_GAS_WELL_ID	<p>The oil lease number or gas well ID number for the inspected oil lease or well or gas well at the time of the</p>

Data Field Name	Data Field Description
	<p>inspection. An oil lease number is five digits, and a gas well ID is six digits.</p> <p>When the inspected location is a facility or the oil lease number or gas well ID is unknown, this field may be blank or contain the best data available and documented by the inspector.</p>
LEASE_FAC_NAME	<p>The name of the oil/gas lease or facility at the time of the inspection.</p> <p>When the lease or facility name of the inspected location is unknown, this field may be blank or contain the best name available and documented by the inspector.</p>
API_NO	<p>The API number of the inspected wellbore at the time of the inspection. The API number consists of eight digits. The first three digits are the county code, and the next five digits are assigned by the RRC.</p> <p>When the API number of the inspected well is unknown, this field may be blank or contain the best data available and documented by the inspector.</p>
COUNTY	<p>The name of the county in which the inspection was conducted.</p>
WELL_NO	<p>The operator-assigned well number of the inspected well (i.e., well completion) at the time of the inspection.</p> <p>When the well number of the inspected well is unknown, this field may be blank or contain the best data available and documented by the inspector.</p>
INSPECTION_DATE	<p>The date that the inspector performed the inspection.</p>
DRILLING_PERMIT_NO	<p>The drilling permit number for the inspected wellbore at the time of the inspection.</p> <p>When the drilling permit number of the inspected well is unknown, this field may be blank or contain the best data available and documented by the inspector. A drilling permit number is</p>

Data Field Name	Data Field Description
	usually documented when conducting an inspection prior to a well completion.
COMPLAINT_NO	When the inspection was performed in response to a complaint received by the RRC, this field contains the RRC-assigned number for that complaint.
COMPLIANCE	<p>The compliance status of the inspection.</p> <ul style="list-style-type: none"> • Yes - All inspected statewide rules were found to be compliant during the inspection. • No - At least one statewide rule was found to be non-compliant during the inspection and certified as non-compliant in the RRC technical review of the inspection.
FIELD_NAME	<p>The name of the field associated with the inspected lease, well, facility, or site at the time of the inspection.</p> <p>When the field name associated with the inspected location is unknown, this field may be blank or contain the best name available and documented by the inspector.</p>

Violations Data Sets

The following field names and descriptions apply to the statewide and district **violations** data sets.

Data Field Name	Data Field Description
OPERATOR_NAME	<p>The name of the operator of the inspected lease, well, facility, or site at the time of the inspection.</p> <p>When the operator of the inspected location is unknown, this field may be blank or contain the best name available and documented by the inspector.</p>
P5_OPERATOR_NO	The P-5 number of the operator of the inspected lease, well, facility or site at the time of the inspection. This number

Data Field Name	Data Field Description
	<p>is assigned to the organization by the RRC with the initial filing of the Form P-5, Organization Report.</p> <p>When the operator number of the inspected location is unknown, this field may be blank or contain the best data available and documented by the inspector.</p>
DISTRICT	<p>The district number represents the RRC completion district associated to the RRC assigned lease number or gas well ID at the time of the inspection. If the inspected location does not have an assigned lease number or gas well ID, the district number is the RRC Oil & Gas district where the site is located.</p>
OIL_LEASE_GAS_WELL_ID	<p>The oil lease number or gas well ID number for the inspected oil lease or well or gas well at the time of the inspection. An oil lease number is five digits, and a gas well ID is six digits.</p> <p>When the inspected location is a facility or the oil lease number or gas well ID is unknown, this field may be blank or contain the best data available and documented by the inspector.</p>
LEASE_FAC_NAME	<p>The name of the oil/gas lease or facility at the time of the inspection.</p> <p>When the lease or facility name of the inspected location is unknown, this field may be blank or contain the best name available and documented by the inspector.</p>
API_NO	<p>The API number of the inspected wellbore at the time of the inspection. The API number consists of eight digits. The first three digits are the county code, and the next five digits are assigned by the RRC.</p> <p>When the API number of the inspected well is unknown, this field may be blank or contain the best data available and documented by the inspector.</p>
COUNTY	<p>The name of the county in which the inspection was conducted.</p>

Data Field Name	Data Field Description
WELL_NO	<p>The operator-assigned well number of the inspected well (i.e., well completion) at the time of the inspection.</p> <p>When the well number of the inspected well is unknown, this field may be blank or contain the best data available and documented by the inspector.</p>
DRILLING_PERMIT_NO	<p>The drilling permit number for the inspected wellbore at the time of the inspection.</p> <p>When the drilling permit number of the inspected well is unknown, this field may be blank or contain the best data available and documented by the inspector. A drilling permit number is usually documented when conducting an inspection prior to a well completion.</p>
FIELD_NAME	<p>The name of the field associated with the inspected lease, well, facility, or site at the time of the inspection.</p> <p>When the field name associated with the inspected location is unknown, this field may be blank or contain the best name available and documented by the inspector.</p>
VIOLATED_RULE	<p>The statewide rule found to be non-compliant during the inspection and certified as non-compliant in the technical review of the inspection.</p>
VIOLATED_RULE_DESC	<p>A short description of the violated statewide rule.</p>
MAJOR_VIOL_IND	<p>Indicates if the violation was classified as a major violation during the RRC technical review of the inspection.</p> <ul style="list-style-type: none"> • Yes - The violation was identified as major during the RRC technical review of the inspection. • No - The violation has not been identified as major.

Data Field Name	Data Field Description
COMPLIANT_ON_REINSP	<p>Indicates if the violation was found to be compliant in subsequent backcheck inspections (i.e., follow-up inspections).</p> <ul style="list-style-type: none"> • “-” - A dash indicates that a backcheck inspection has not been performed for this violation. • Yes - The violated statewide rule was found to be compliant in subsequent backcheck inspections. • No - The violated statewide rule was found to be non-compliant in subsequent backcheck inspections.
LAST_ENF_ACTION	The most recent enforcement action taken by the RRC Oil and Gas Division in response to this violation.
LAST_ENF_ACTION_DATE	The date the RRC technical reviewer last reviewed and certified the last enforcement action.
VIOLATION_DISC_DATE	The first date that the inspector marked the statewide rule as non-compliant during an inspection.

Opening Text Files in Microsoft Excel

You can open the text files in Microsoft Excel using the *Text Import Wizard* so that each data field displays in its own column.

Before opening the text files, you must extract the files from the downloaded compressed (zipped) folder. Methods for extracting files may vary depending on the computer’s operating system.

To Extract a File from a Compressed Folder

Note: The following instructions were written using the Windows 7 operating system. If you use a different operating system, the steps may vary.

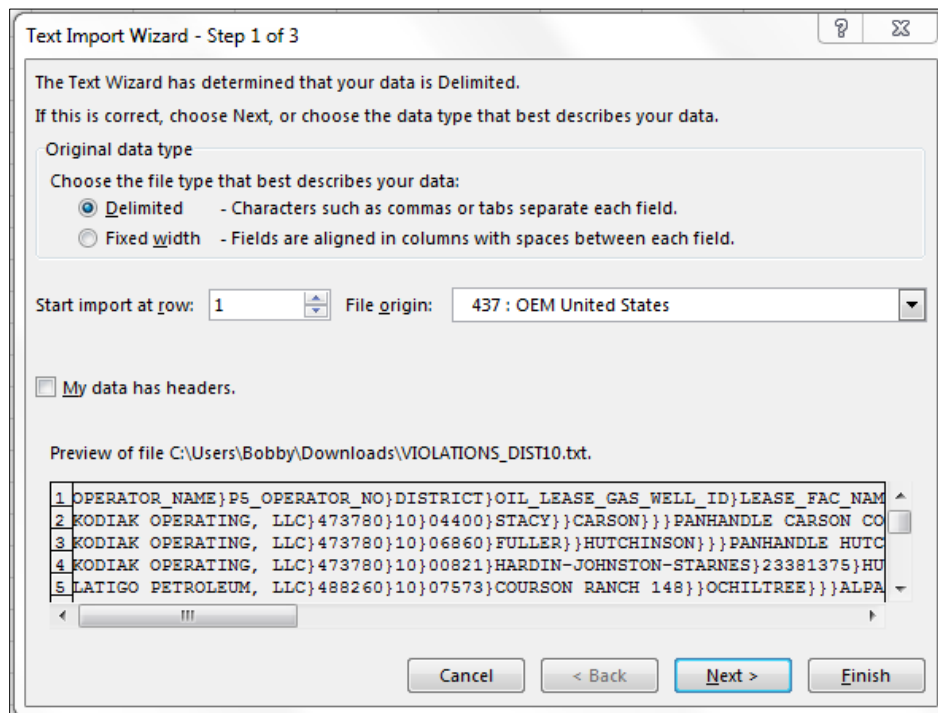
1. Open Windows Explorer.
2. Navigate to the downloaded compressed folder.

3. Right-click the folder.
4. In the right-click menu, select **Extract All**. The *Extract Compressed (Zipped) Folders* dialog box displays.
5. If needed, browse to the location where you want to save the extracted file.
6. Click the **Extract** button. The file is extracted.

To Open a Text File in Microsoft Excel

Note: The following instructions were written using Microsoft Excel 365. If you use a different version of Microsoft Excel, the steps may vary.

1. Open a blank Excel spreadsheet.
2. Click the **File** tab, and select **Open**.
3. Select **Browse**. The *Open* dialog box displays.
4. Confirm that you are viewing **All Files** in the dialog box.
5. Navigate to the text file and click the **Open** button. The *Text Import Wizard – Step 1 of 3* displays.



6. Click **Next**. The *Text Import Wizard – Step 2 of 3* displays.

Text Import Wizard - Step 2 of 3

This screen lets you set the delimiters your data contains. You can see how your text is affected in the preview below.

Delimiters

- Tab
- Semicolon
- Comma
- Space
- Other:

Treat consecutive delimiters as one

Text qualifier:

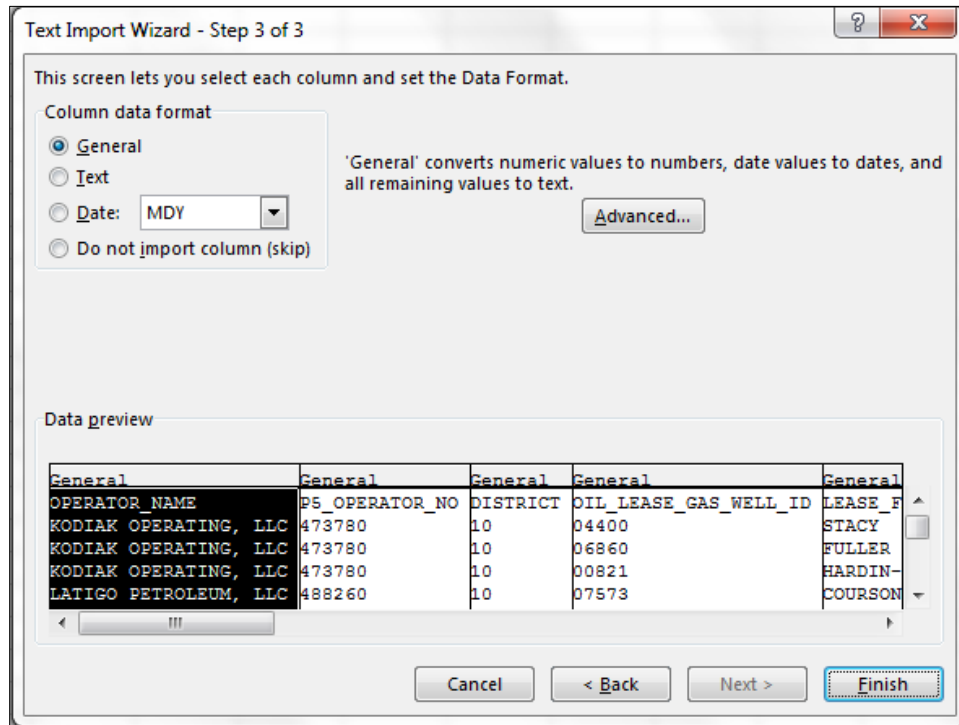
Data preview

OPERATOR_NAME	PS_OPERATOR_NO	DISTRICT	OIL_LEASE_GAS_WELL_ID	LEASE_F
KODIAK OPERATING, LLC	473780	10	04400	STACY
KODIAK OPERATING, LLC	473780	10	06860	FULLER
KODIAK OPERATING, LLC	473780	10	00821	HARDIN-
LATIGO PETROLEUM, LLC	488260	10	07573	COURSON

Buttons: Cancel, < Back, Next >, Finish

7. In the *Delimiters* area, deselect the **Tab** check box and select the **Other** check box. Enter **}** in the adjacent field. The *Data preview* area displays the data in columns.

8. Click **Next**. The *Text Import Wizard – Step 3 of 3* displays.



9. Click **Finish**. The data displays in the spreadsheet format.

Tip: You can adjust column widths in Microsoft Excel as needed.

Version

V	Revision Date	Author	Review Date	Reviewer	Reason for Create or Update
1.0	01/02/2019	Leanna Miles	01/09/2019	Trey Krueger/Don McGrew	Version 1.0