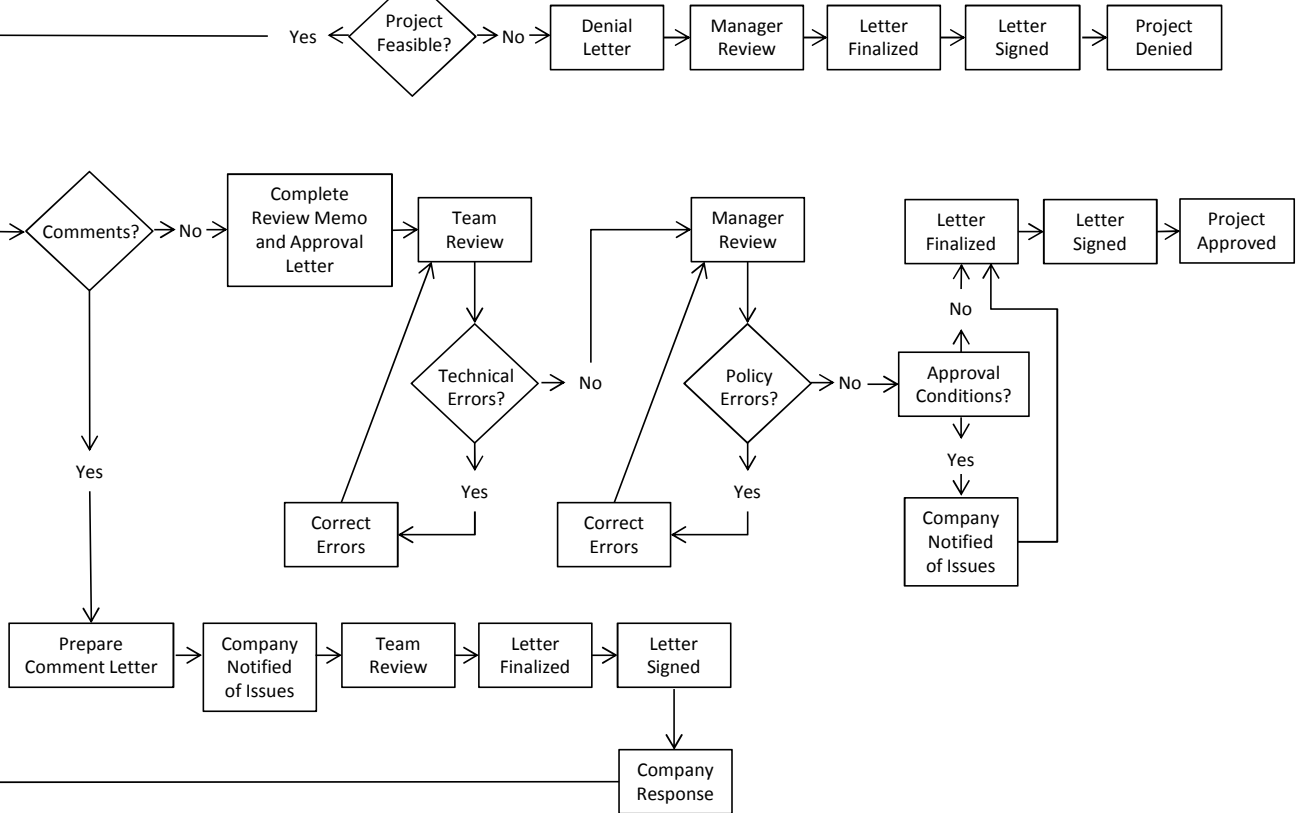
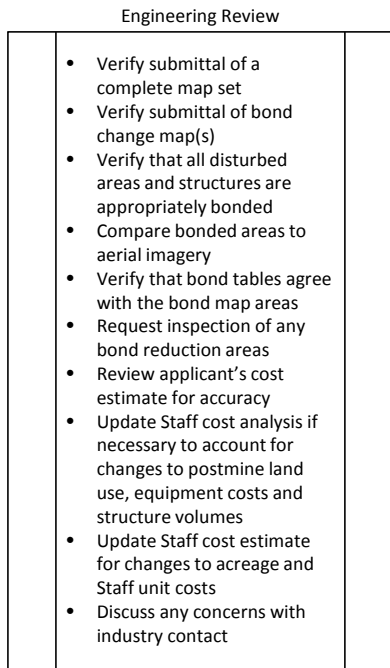
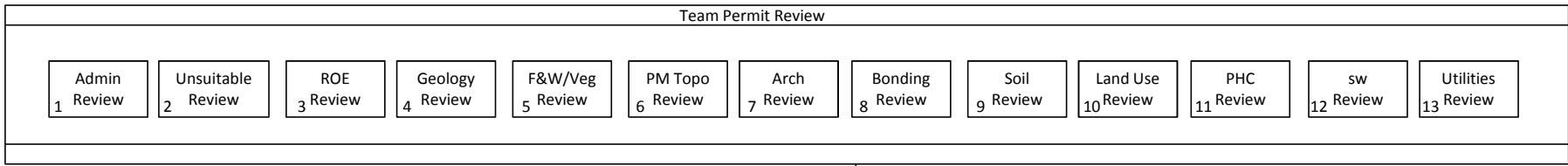
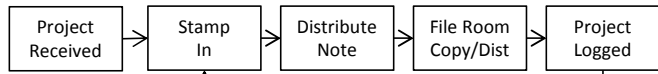


Bond Map Review Process Map



1

Administrative Review

<ul style="list-style-type: none"> • Verify submittal of application filing fee • Verify submittal of Form SMRD-2C • Verify assignment of revision number • Determine whether changes are an administrative or significant revision • §§12.108 and 12.226 	
--	--

2

Unsuitability Review

<ul style="list-style-type: none"> • Verify in section .118 of the permit that the area is not in an area unsuitable for mining • Review permit boundary map to verify that changes are located within the permit boundary • Review map of public roads in the permit to verify disturbance will be more than 100 feet from the right-of-way of any public road or a buffer zone variance is approved • §§12.71 and 12.152 	
--	--

3

Right-of-Entry Review

<ul style="list-style-type: none"> • Locate the affected area on the approved property map • Identify affected property tracts • Review property ownership information in the permit to verify that right-of-entry has been documented for the affected tracts • Verify that any necessary landowner consultation is provided • Review approved property map to verify that disturbance will be over 300 feet from an occupied dwelling or a waiver from the dwelling owner is provided • §12.117 	
---	--

4

Geology Review

<ul style="list-style-type: none"> • Review the approved continuous core map to verify adequate continuous core density for the affected area • Verify that supplemental borehole data is not needed • Review any provided plan/profile maps to determine the depth of any proposed cuts • Verify adequacy of the approved AFM disposal plan • Review the approved dewatering/depressurization plan to determine impacts to the approved dewatering and/or depressurization plan • §§12.127, 12.128 and 12.145 	
--	--

5

Fish & Wildlife/ Vegetation Review

<ul style="list-style-type: none"> • Review the approved USACE permit to determine if the proposed disturbance is within the approved USACE disturbance boundary • Review permit section .133 to verify that the disturbance will not affect threatened and/or endangered species • Determine whether fish and wildlife enhancements are needed • Review the approved planting lists to verify adequacy of the proposed plan • §§12.133, 12.144 and 12.145(b)(5) 	
---	--

6

Postmine Topography Review

<ul style="list-style-type: none"> • Identify the approved postmine topography maps • Verify that proposed changes are consistent with the approved postmine topography • Verify that any needed general design plans are provided or already approved • Review the approved postmine slope map to verify that the proposed changes are supported • §§12.137(a)(11) and 12.145(b)(3) 	
---	--

7

Archeology Review

<ul style="list-style-type: none"> • Review the approved cultural resources information in the permit to determine the proximity of proposed disturbance to known sites • Determine if disturbance will affect a site listed or eligible for listing on the National Register of Historic Places • Verify clearance by the Texas Historical Commission of any impacted sites • §§12.125(2) and 12.151 	
---	--

8

Bonding Review

<ul style="list-style-type: none"> • Identify the approved bond map • Verify adequate bonding coverage for all proposed disturbance • Verify that proposed disturbance is accounted for in the approved reclamation cost estimate • Review the approved bond map to determine if the proposed activities will impact areas not covered by the bond or areas where bond release was previously approved • §§12.142(2)(C) and 12.145(b)(2) 	
---	--

Soil Review

<ul style="list-style-type: none"> Review the approved soil testing plan and verify that new disturbed areas are located within the approved soil bank Review the approved prime farmland soil map to determine if prime farmland soils are affected Determine if the approved soil handling plan is sufficient for the proposed activities Verify the suitability and disposition of excavated materials is adequately addressed Verify suitability of material in borrow areas Verify the location of disposed excess material Determine if any special soil testing plan is needed §§12.134, 12.12.138 and 12.145(b)(4) 	
--	--

Utilities Review

<ul style="list-style-type: none"> Identify the approved utilities map Determine if active hazardous pipelines are located within 100 feet of proposed cuts For cuts within 100 feet of a pipeline, verify that pipeline owner consent has been provided or a buffer zone variance is approved Verify that sufficient information is provided to find that the structural integrity of any affected pipeline will be maintained Verify sufficient cover remains over affected pipelines §§12.137(a)(10) and 12.382 	
--	--

Postmine Land Use Review

<ul style="list-style-type: none"> Identify the approved postmine land use map Determine if the proposed disturbance is new Determine the approved postmine land use for the affected area Determine if the proposed changes would result in changes to the approved postmine land use plan Verify that necessary landowner consultation has been provided §§12.147 and 12.399 	
--	--

Probable Hydrologic Consequences Review

<ul style="list-style-type: none"> Review the approved LTGM and LTSM plan maps to determine if the proposed changes will impact the approved long term surface and/or ground water monitoring plans Determine if the proposed changes will exceed evaporative losses or pond acreage considered in the approved PHC Review the approved TPDES outfall map to determine if any TPDES outfalls will be affected by the proposed changes Review the approved LTGM and LTSM plan maps to determine if the affected area is within the LTSM/LTGM monitored areas §12.146 	
--	--

Surface Water Review

<ul style="list-style-type: none"> Review the approved surface water control map to verify that the proposed activities are within the approved surface water control boundary For areas outside the approved surface water control boundary, verify submittal of a site-specific erosion control plan Review the approved map of surface water bodies to determine impacts to stream channels Verify that a stream buffer zone variance is proposed or has been approved for affected streams channels §§12.137(a)(7),12.148, 12.341, 12.343, 12.344, 12.347 and 12.355 	
---	--